

BF400 Fingerprint Door Lock Installation Manual



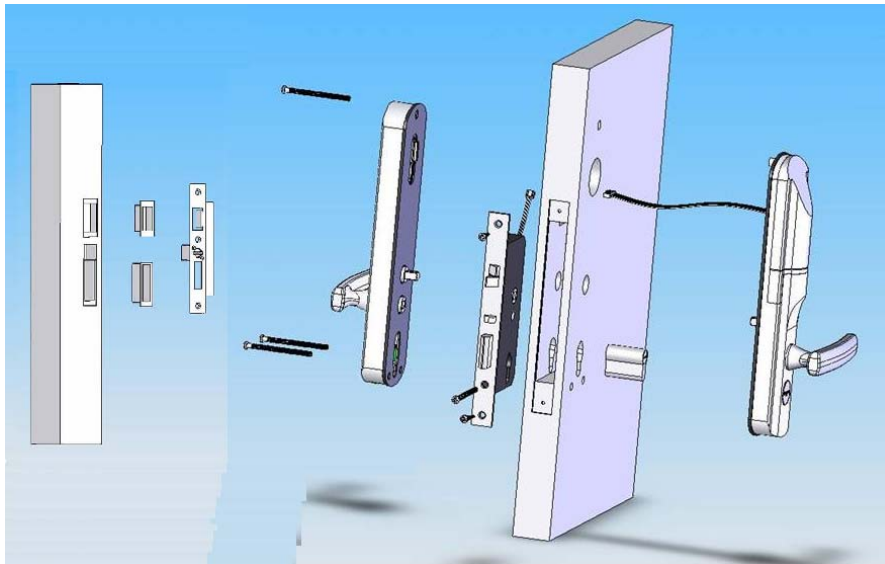
1, Before installation

一、 Notice

1. To check all the enclosed material following the package list.
2. To check the new door lock is perfect or defaced.
3. Don't register the finger before to finish the installation.
4. To make sure that the Key can open the door before to finish the installation.
5. To make sure that the finger is registered successfully and the finger can open the door before to close the door.

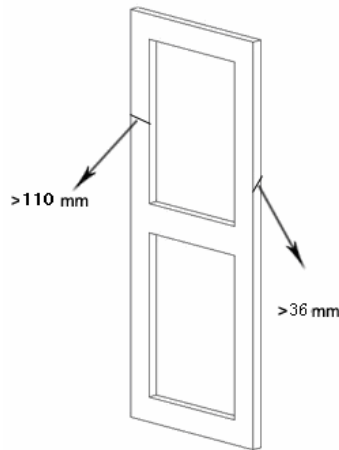
(Some time, the end user will face the troubles, he/she can not make sure that the finger registered successfully or failed, and the key is inside the room. But he/she closes the door, then he/she will face the trouble. He/she cannot open the door)

6. To learn all the options before installation.
7. To make sure that all the installation should be careful , so that the Door will be never defaced or destroyed











2, About the requirement for door

1. It can be installed on the wooden door, or metal door.
2. The dimension of door's thickness should be more then 36mm.
3. The width of the lock area should be more then 110mm.



3, About tools

 <p>Electric drill</p>	 <p>Hammer</p>	 <p>Auger bit</p>
 <p>Screwdriver</p>	 <p>Cut-off knife</p>	 <p>Tape measure</p>
 <p>Pencil</p>	 <p>Chisel</p>	

4, Installation

There are seven steps in all the installation

Step 1, To make the hole in the door side for lock body

Step 2, To install the lock body, and then check the position without fixing by screw

Step 3, To set the correct position for the lock handles.

Step 4, To make the hole in the door to install the lock handles, and then check the position without fixing

Step 5, To confirm all the positions suitability with case handles and lock body

Step 6, To install the other part on the doorframe

Step 7, To test and fix, then finish the whole installation

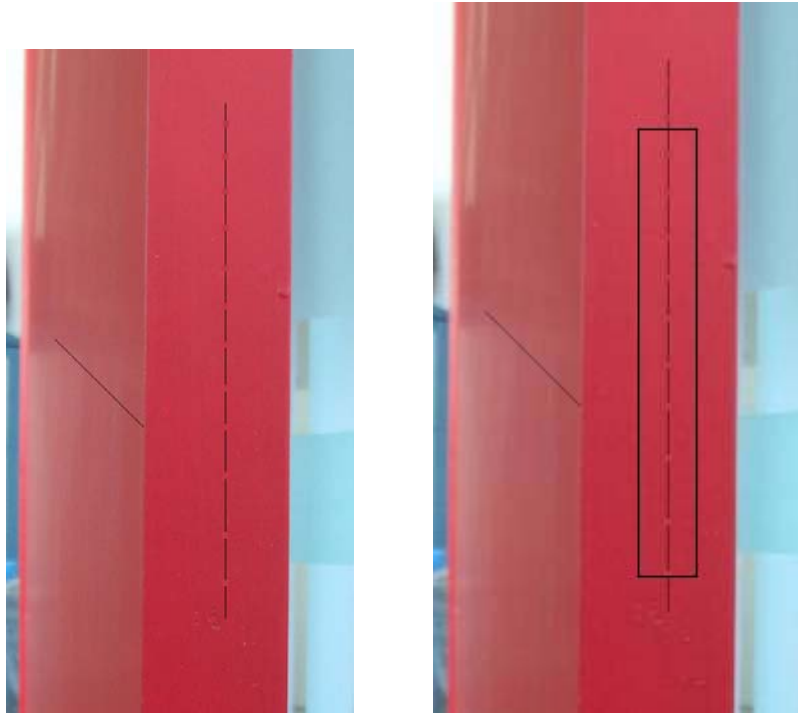
Step 1, To make the hole in the door side for lock body

1. To confirm the correct high and position on the door. To set one line where the handle will be there



2. To confirm the correct position for the lock body, to set the line in the middle of

the door side



3. To make the hole in the door side.

By the drill, the installation should be more careful. And then to make it suitable with the chisel,



Step 2, To install the lock body, and then check the position without fixing by screw

To make the hole in the door side. And then try to install the lock body inside the hole, to confirm the position again.



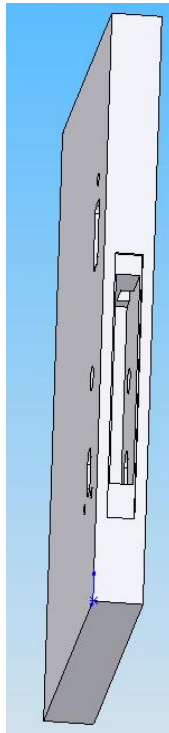
Step 3, To set the correct position for the lock handles.

After installation the lock body, then no need to fix with the screw firstly so that the lock body can be changed if need in next step.



Step 4, To make the hole in the door to install the lock handles, and then check the position without fixing



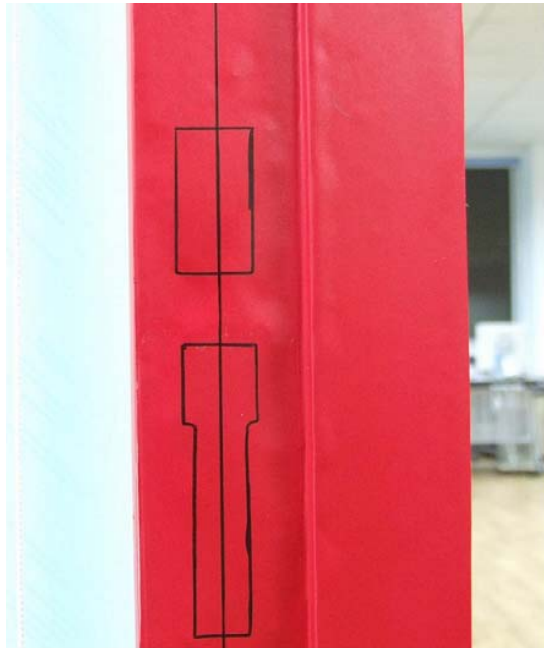


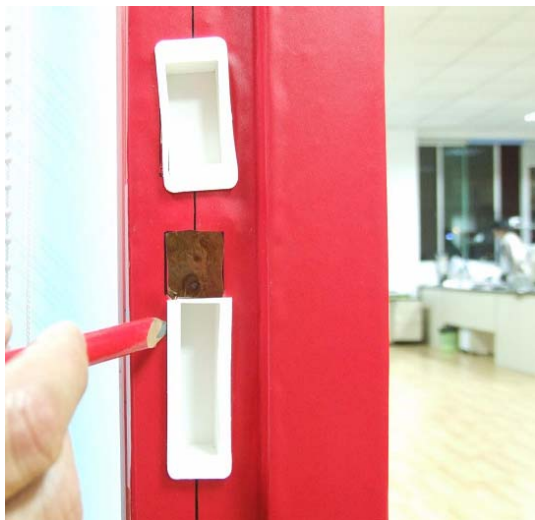
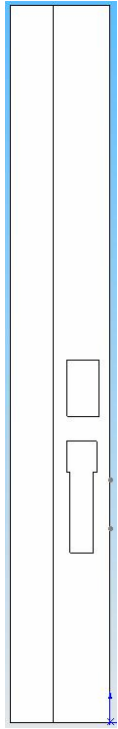
Step 5, To confirm all the positions suitability with case handles and lock body

Before fixing with the screw, to confirm with all the position on the case handle and the lock body together.



Step 6, To install the other part on the doorframe







Step 7, To test and fix, then finish the whole installation



